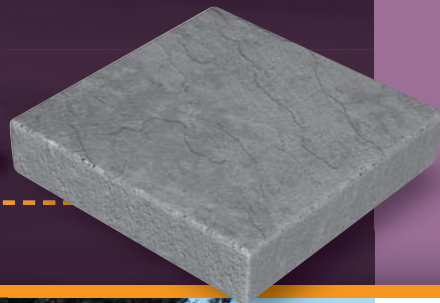


STONE RIDGE XL



STONE RIDGE XL: Travertina and
Oyster Blend Mix (Random)



nicolock[®]
paving stones & retaining walls



new york • new jersey • new england • maryland



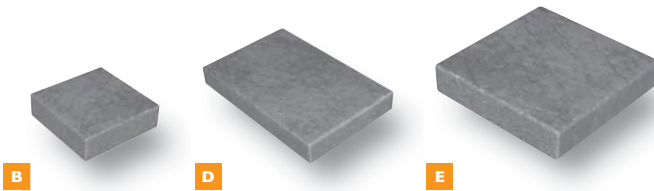
nicolock.com

STONERIDGE XL

Manufactured by:
NICOLOCK
 paving stones & retaining walls

Features

- Multi-size rectangular shapes • Slightly textured riven surface • Slightly chamfered edges
- Can be combined with STONE RIDGE • Not recommended for vehicular traffic



**ADD
 RIDGE CIRCLE
 TO YOUR
 DESIGN!**

Specifications

	width	length	thickness	pcs./s.f.	s.f./pallet	pcs./pallet	lbs./pallet
A	9"	9"	2-3/8"	-	110	20	3,080
B	9"	18"	2-3/8"	-	-	50	-
C	18"	18"	2-3/8"	-	-	20	-

Sizes not sold separately.

Color Selections

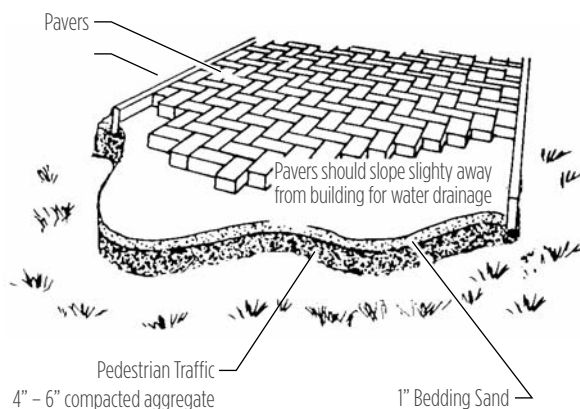


* denotes premium color
 ** denotes deluxe color

INSTALLATION GUIDELINES: SAND

After excavation, compact the subgrade and install a woven separation fabric. Spread and compact a base of clean, graded, dense aggregate (road base). Typical compacted base thickness is 4-6" for pedestrian applications. Pavers are set on a loosely screeded 1" bed of graded, clean concrete sand. Maintain a joint size of 1/16" - 3/16". When pavers are set, compact paving stones into sand with mechanical plate vibrator. Joint sand may be spread over paving stones during compaction. Installed pavers should be set 1/8" to 1/4" above final elevations to compensate for any potential settlement. Spread clean dry sand over surface and broom sweep to fill joints.

CROSS-SECTION OF TYPICAL INSTALLATION



CAUTION: Always use a plate compactor with a pad when installing any textured paving stone.



Nicolock's Paver-Shield™

- Ultra-dense surface with more color and more protection. Nicolock has color from top to bottom throughout the paver ensuring a lifetime of beauty. Iron oxide pigments are guaranteed not to fade!

CAUTION: Always use a plate compactor with a pad when installing textured paving stones.

NOTE: All measurements are nominal. Variance in square footage or linear footage coverage can be up to 5% depending on joint width. The possible occurrence of efflorescence does not affect the structural integrity of the product. Efflorescence is a normal occurrence in concrete products and will dissipate with normal weathering. The use of concrete as a base or setting bed may increase the possibility of efflorescence.