

# SF-RIMA®

Square shape and flat surface give these pavers a contemporary look. Chamfered edges give it a real stone feel. 10% open surface area and joint opening make these stones compliant with the Americans with Disabilities Act. (ADA)

Environmental Pavers

- SQUARE SHAPE
- FLAT SURFACE
- 10% OPEN SURFACE AREA
- JOINT OPENING COMPLIANT WITH THE AMERICANS WITH DISABILITIES ACT (ADA)

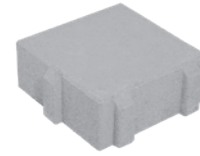


SF-Rima® | Color: Golden Brown Blend



# SF-RIMA®

WIDTH	LENGTH	THICKNESS	SF / PALLET	PCS / PALLET	LBS / PALLET
8"	8"	3 1/8"	91	192	3,218



Golden Brown Blend

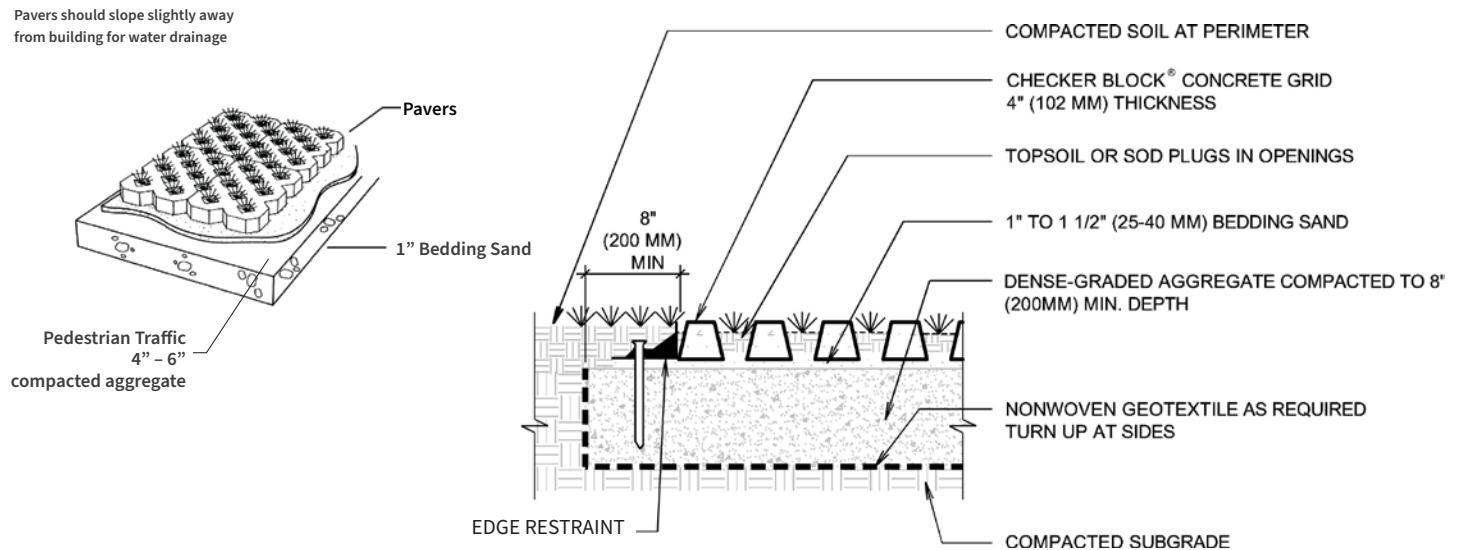


Granite City Blend



## CROSS-SECTION OF TYPICAL INSTALLATION

Pavers should slope slightly away from building for water drainage



## INSTALLATION GUIDELINES: SAND

After excavation, compact the sub grade and install a woven separation fabric. Spread and compact a base of clean, graded, dense aggregate (road base). Typical compacted base thickness is 4-6" for pedestrian applications. Pavers are set on a loosely screened 1" bed of graded, clean concrete sand. Maintain a joint size of 1/16" – 3/16". When pavers are set, compact paving stones into sand with mechanical plate vibrator. Joint sand may be spread over paving stones during compaction. Installed pavers should be set 1/8" to 1/4" above final elevations to compensate for any potential settlement. Spread clean dry sand over surface and broom sweep to fill joints.

**NOTE:** All measurements are nominal. Variance in square footage or linear footage coverage can be up to 5% depending on joint width. The possible occurrence of efflorescence does not affect the structural integrity of the product. Efflorescence is a normal occurrence in concrete products and will dissipate with normal weathering. The use of concrete as a base or setting bed may increase the possibility of efflorescence.

**CAUTION:** Always use a plate compactor with a pad when installing any textured paving stone.

