

# Sanctuary Bowls

**nicoLOCK**<sup>®</sup>

PAVING STONES • RETAINING WALLS • OUTDOOR LIVING



Fire Pits | Fireplaces



# Sanctuary Bowls

## Sanctuary 1



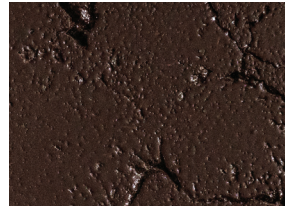
### FEATURES

- Ignition Systems: AWS or TPSI
- Dimensions: 56" W x 16" H x 38" D
- Outdoor GFRC Fire Table (430 lbs. - Table Only)
- Choose between Natural Gas (NG) and Propane (LP)
- Natural Gas: 65,000 Btu's
- Includes weather cover

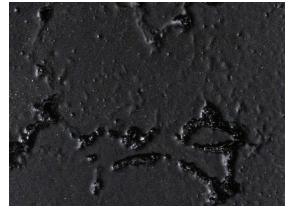
### AVAILABLE IN:



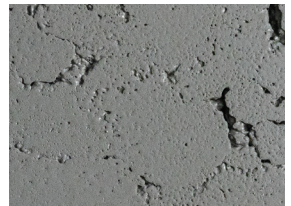
ARCTIC



CHOCOLATE



RAVEN



SLATE

## Sanctuary 2



### FEATURES

- Ignition Systems: MT, TPSI or AWS
- Dimensions: 39" Diameter x 18" H
- Outdoor GFRC Fire Bowl (222 lbs. - Bowl Only)
- AWS & MT ship as Natural Gas (NG) or Propane (LP)
- TPSI ships as Natural Gas (NG)
- Liquid Propane (LP) conversion kits sold separately
- Natural Gas: 65,000 Btu's (MT units: 75,000 Btu's)
- Includes weather cover

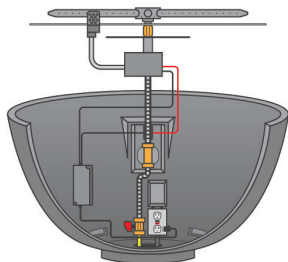
## Sanctuary 3



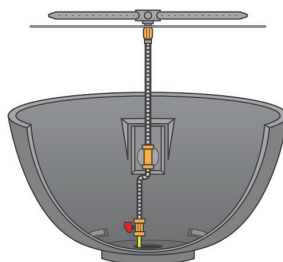
### FEATURES

- Ignition Systems: MT, TPSI or AWS
- Dimensions: 30" Diameter x 14 1/4" H
- Outdoor GFRC Fire Bowl (112 lbs. - Bowl Only)
- AWS & MT ship as Natural Gas (NG) or Propane (LP)
- TPSI ships as Natural Gas (NG)
- Liquid Propane (LP) conversion kits sold separately
- Natural Gas: 65,000 Btu's (MT units: 75,000 Btu's)
- Includes weather cover

### AWS IGNITION



### MT IGNITION



### TPSI IGNITION

